



A9 ARCHITECTS

**SELECTED NON-RESIDENTIAL
DEVELOPMENTS**

RIBA 
Royal Institute of
British Architects

arb
Architects Registration Board

OPTIMUM
SOLUTIONS



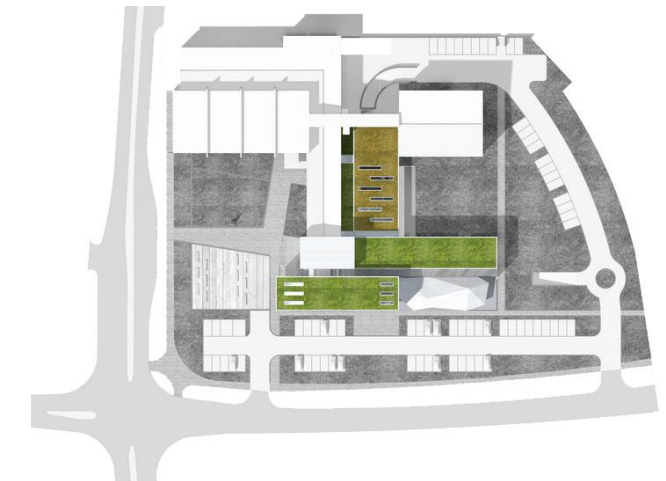
Client: Ministry of Education
Size: 2.200m²
Sector: Education



INTERNATIONAL ARCHITECTURAL
COMPETITION
1st PLACE WINNER
PLAN

SECONDARY SCHOOL EXTENSION REYKJAVIK, ICELAND

First place winner of a prestigious international competition. The extension of the school includes new classrooms for book studies, natural science and art department. A new library – according to an ancient Icelandic myths - formed as the 'stone of knowledge' and a new administration block were also part of the extension.



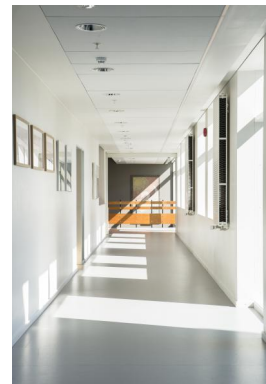


Client: Ministry of Education
Size: 2.200m²
Sector: Education



INTERNATIONAL ARCHITECTURAL
COMPETITION
1st PLACE WINNER
PLAN

SECONDARY SCHOOL EXTENSION REYKJAVIK, ICELAND (interiors)





THIN, SHARP LINE

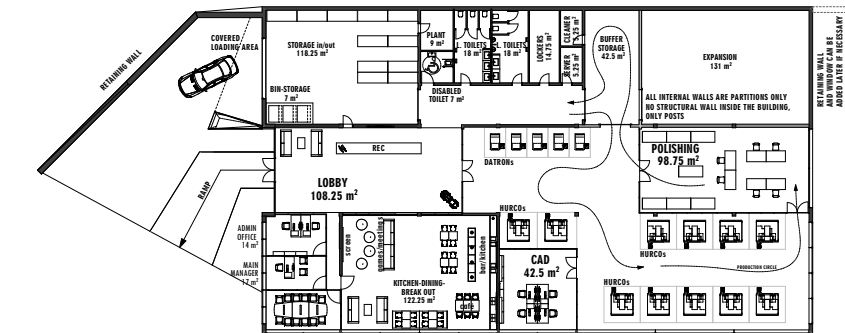


Client: WCM
Size: 912m²
Sector: Light-industrial



CNC FACTORY IN THE WELSH WOODS (WYE VALLEY AREA)

The theme of the building could be the connection of nature and middle 21st century high-technology. Our assumption is that the degree of technological progress is reached (or will reach very shortly) a level when it is possible to work together with nature instead of work against (conquer) nature. We are facing a paradigm shift, the new era of technology will not dominate and ruin nature as it has been happening since the Industrial revolution. The new era will be based on technologies work in harmony with nature to secure the future of mankind. The proposed building could represent this new kind of connection between nature and human.





Client: WCM
Size: 1.600m²
Sector: Light-industrial



HIGH-TECH WAREHOUSE, BASILDON

quotation about our client

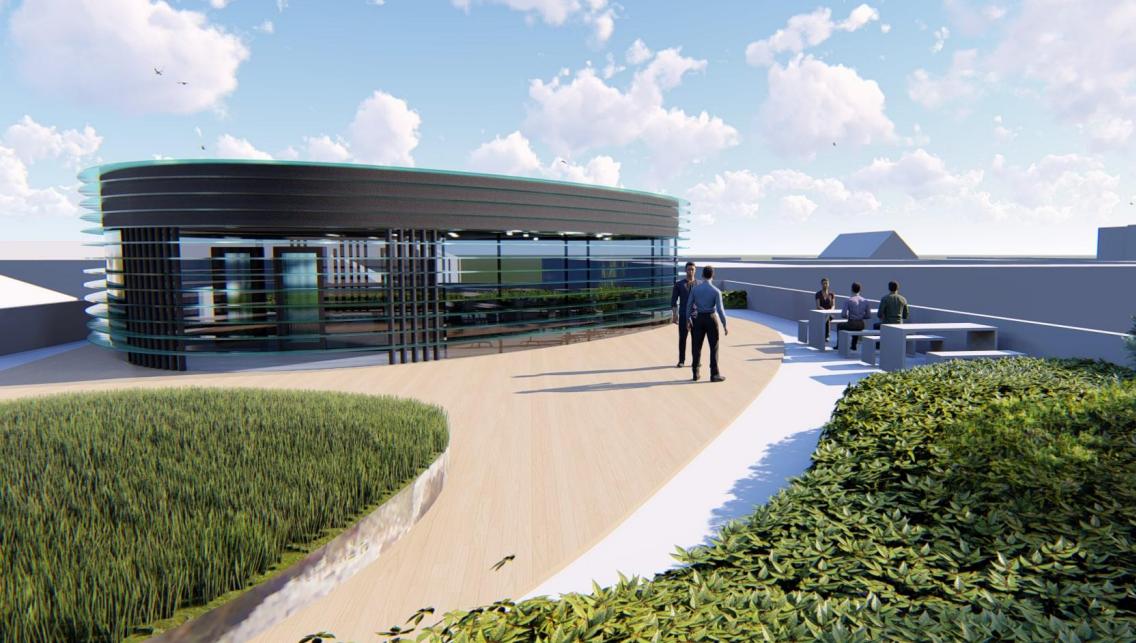
"World Class Manufacturing

WCM combines engineering and manufacturing to produce automotive solutions for leading global brands. The capabilities of the Group's 6 divisions deliver a complete product development service to customers looking to introduce innovative parts, assemblies and systems to market worldwide. The production capabilities within WCM use state of the art manufacturing processes to rapidly and efficiently deliver solutions to OEM's and Tier 1 suppliers."



Advanced Systems
Complex Sub-Assemblies
Bentley Bentayga SUV

Decorative Pressed Metal
Pressed and Bonded Panels
Rolls-Royce Waterspeed



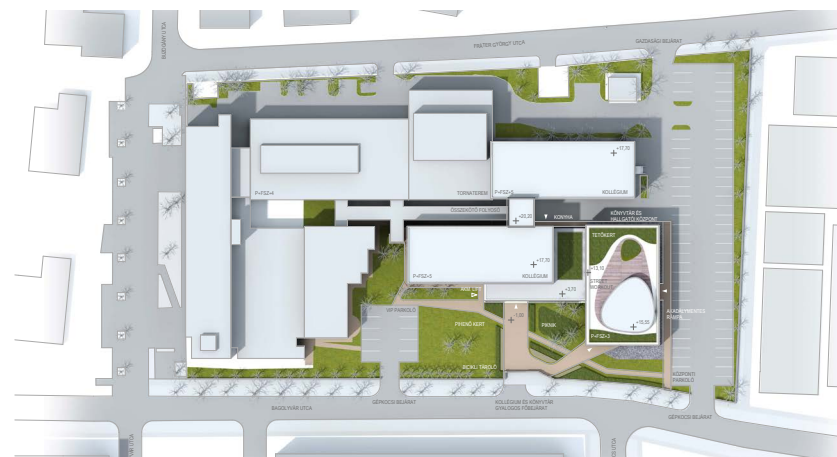
Client: Budapest Business School
Size: 3.046 m²
Sector: Education



INTERNATIONAL ARCHITECTURAL
COMPETITION
3rd PLACE WINNER
PLAN

UNIVERSITY LIBRARY & STUDENT CENTRE COMPETITION ENTRY

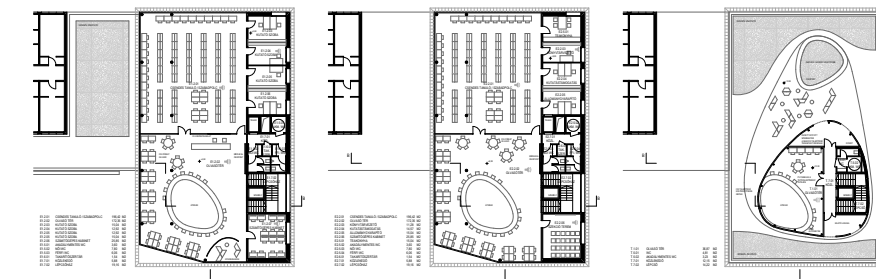
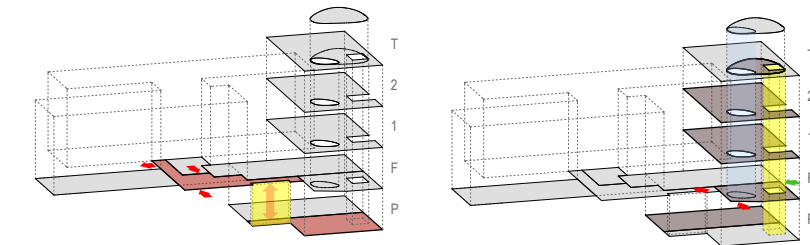
Attached to the existing university building, there were many variables to this complex extension - A new entrance, distinctive façade, new connections and multi-functional use made for a dynamic building. An organic shape central void connects the floors and allows indirect light to penetrate deep in to the building. The external louvers systems prevent overheating and controls ambient light levels. (architectural design was made in cooperation with Afiuk Architects)





INTERNATIONAL ARCHITECTURAL
COMPETITION
3rd PLACE WINNER
PLAN

UNIVERSITY LIBRARY & STUDENT CENTRE COMPETITION ENTRY (interiors)



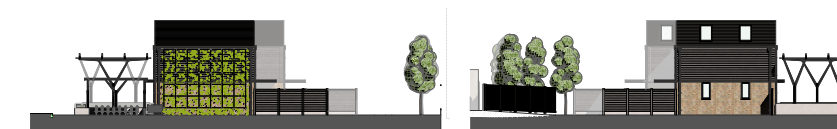


Client: Fairfield Investment Properties
Size: 20 units - 1693 m²
Sector: Light-industrial



LIGHT INDUSTRIAL DEVELOPMENT, HEYBRIDGE BASIN

The aim of this development was to regenerate a derelict former timberyard site wedged into the historical area of this seaside settlement. This proposed development is for the construction of 20 new commercial units on the main components of the Former Timber Yard with a total floor area of approximately 2,150sq.m with associated landscaping and car parking.





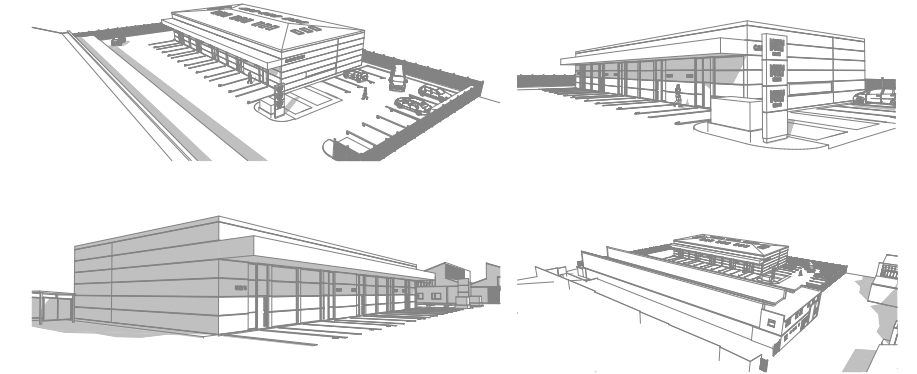


Client: Confidential
Size: 978 m²
Sector: Light-industrial



LIGHT INDUSTRIAL DEVELOPMENT, LEIGH-ON-SEA

The proposed new building maintains a comparable scale, style, and form to the existing buildings within the industrial block, featuring a clean modern design. A streamlined full-length canopy is incorporated above the units' doors. Adjacent to these areas will be a secure bicycle storage for both the employees and visitors. The site accommodates a total of 25 parking spaces, including 2 designated for disabled parking and 5 loading spaces. To enhance accessibility, a Size-3 turning head is available at the Eastern end of the access road.



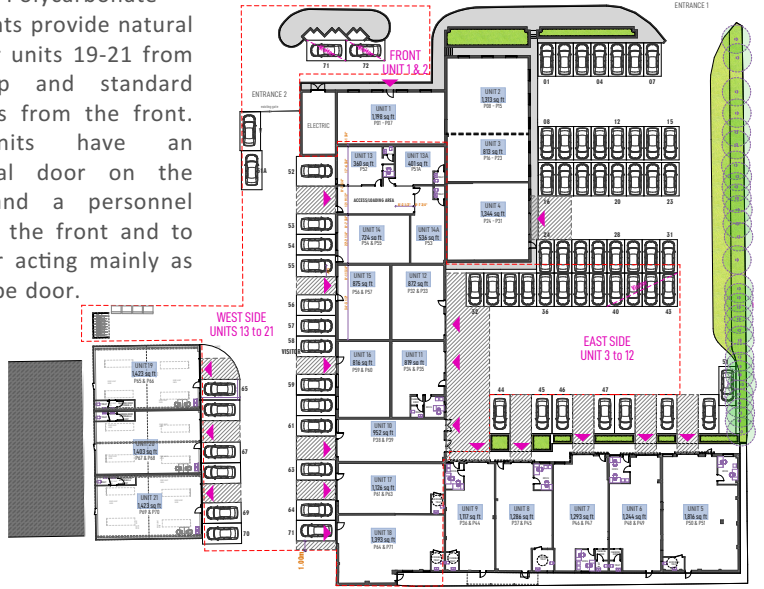


Client: Confidential
 Size: 2280 m²
 Sector: Light-industrial



LIGHT INDUSTRIAL DEVELOPMENT, WITHAM

The proposal follows the scale, style and form of the other buildings of the existing industrial block with a neat modern look. 2 parking spaces per unit plus 2 visitor's parking spaces were allocated, also bicycle storages for staff and visitors. Polycarbonate roof lights provide natural light for units 19-21 from the top and standard windows from the front. All units have an industrial door on the front and a personnel door to the front and to the rear acting mainly as an escape door.







(t) 020 7470 9299
(e) info@a9architects.com

www.a9architects.com

85 Uxbridge Road
Ealing
LONDON
W5 5BW

255 London Road
Hadleigh
EAST OF ENGLAND
SS7 2BN